

Check your water system for leaks.

1. Locate the water meter.

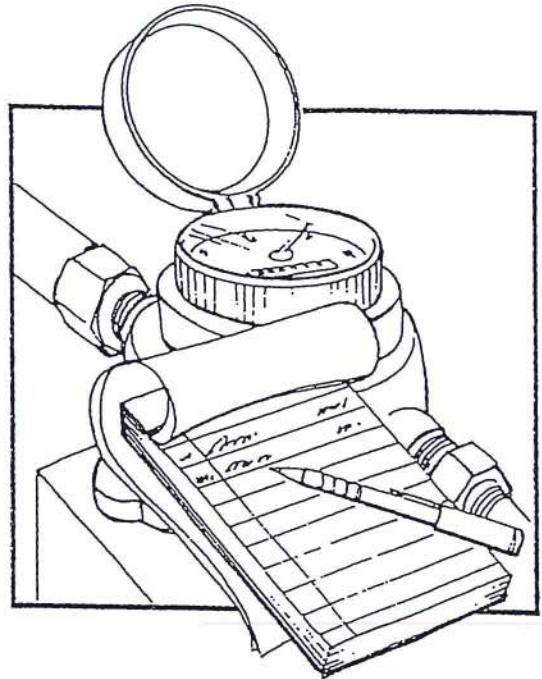
Find your meter box. Most generally located near the street where the water line enters your property. If there is more than one box and meter in the ground, call our office during regular business hours (M – F, 8 – 4) and ask for the serial number off your meter so that you can verify which meter actually serves you.

2. Read the meter twice.

Read it first at night after the day's water use has ended then again in the morning before any water is used.

3. Find the Difference.

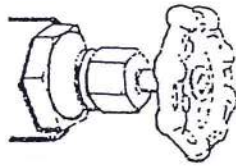
Subtract the first reading from the second reading to tell how much water (if any) leaked overnight.



**Repair leaks at once!
Avoid unnecessary loss of water
resulting in added water charges
to you.**

Check shut-off valves regularly.

Repair or replace as needed. Shut-off valves simplify repairs and save water in emergencies. If you do not have a shut-off valve, we strongly recommend you install one or hire a plumber to do so for you. For it is the property owner's responsibility to install and maintain these valves. And CCWD is not responsible for any water loss or property damage caused by any water leaks and/or high pressure.



**For more information contact the Calaveras County Water District
Customer Service Department at (209) 754-3543.**